

# FlashBrowse II

A browser-based client for SGL FlashNet, featuring low-res proxy creation, fully integrated media search, archive and restore, including batch and partial file restore.

The perfect evolution of speed and efficiency.

**FlashBrowse II** is a new client application for SGL's FlashNet content storage management system that allows broadcasters to capture simple metadata, and to archive and restore media from many different forms of archive. FlashBrowse II is a thin client- and web-based application that provides a simple, elegant and lightweight tool for searching and retrieving content from the archive. The web-based interface allows connection into the archive from virtually any platform: Mac, PC or Linux.

**FlashBrowse II** completely opens up the entire storage network, allowing access to video servers, online and nearline disk storage, plus deep-level archive material in tape libraries. You can browse or search the contents of multiple-format video servers, or of tape archives, and archive or restore, complete with metadata capture, all from within a standard web-browser.

## Archiving

Material can be archived in one of three ways: via a third-party system (e.g. Media Asset Management or Automation system) integrated with SGL's Open System architecture, using a watch folder, which automatically archives items dragged there, or manually, using the FlashBrowse II interface, in a more cost-effective workflow. The FlashBrowse II interface allows users to search connected broadcast video servers for content, then tag and archive it, all with a few mouse clicks.

## Metadata Capture

Tagging clips allows the user to enter descriptive metadata into the available fields: Clip Type, Duration, General Info, Keywords, Location, Program Type, Program Number and Shot List. This metadata capture greatly enhances the search capabilities of any system, providing fast and efficient search results with the minimum of user input. In addition, metadata can be added at any time throughout the workflow; items can be tagged as soon as they are loaded onto the video server, or at any time after they have been moved to the archive.

## Simple and Advanced Search

Both simple and Boolean searches are available in FlashBrowse II. This allows users to search on a wide variety of attributes, from simple content searches to advanced, specific metadata queries. Search is not restricted to archived data either; users can search for content across any or all supported video servers, as well as in different layers of storage throughout the archive. This allows search of multi-location storage as part of general 'house-keeping' routines, as well as specific archive searches.

## Proxy Images

Not only can users search for content held in the archive, but they can view it without restoring from the archive. The proxy plug-in for FlashBrowse II means low-resolution copies are made of all material as it arrives in the archive. Search results indicate if a browse copy of a clip is available, and with a simple click the user can view the low-res version of the clip in the embedded media player before deciding to restore.

## Solutions that fit

Whoever you are, whatever you do, SGL has a solution that not only offers significant ROI values, but will revolutionise the way you work. Some of the biggest names in broadcast from around the world have already adopted the SGL Open System approach. Our client list includes NBC News, CBS News, ESPN, BBC, TV Azteca, CNBC News, HBO Asia, MTV Turkey, Cox Enterprises and Fox, as well as many others from the smallest call-letter stations to the largest networks.

## Restoring

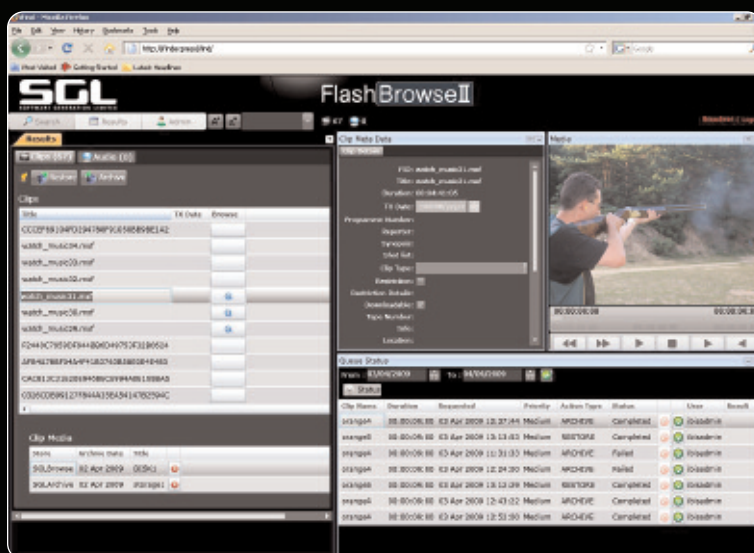
Restoring is as simple as archiving. Once required clips have been located using the Search, users can restore the media back to the original location or to a different location simply by clicking the relevant icon.

## Partial File Restore

The built-in viewer features mark-in and mark-out functionality that allows users to specify partial restore start and end points. After marking a segment in the viewer the user simply clicks to instigate the Partial Restore.

## Batch Restore

Partial restores are not limited to just one segment along the timeline of a single clip. Multiple segments can be marked with in and out points and batch restored as easily as a single segment.



Open System is the philosophy that drives the development of SGL's broadcast solutions. It means that all our solutions are developed to be as accessible

and integration-friendly as possible. Our products and services are designed and produced in conjunction with all leading broadcast vendors, in all arenas, providing seamless operation in any broadcast environment.

SGL's innovative XML-based API provides an open-standard, non-proprietary method for any 3rd-party to easily integrate with the FlashNet core engine. SGL is **the** Open System, providing customers with more effective and efficient, **integrated** solutions.

[www.sgluk.com](http://www.sgluk.com)

the evolution of technology

12, Fulcrum 2, Solent Way, Whiteley, Fareham, Hampshire  
Tel: 4 4 (0) 1489 88 99 30 • Fax: 4 4 (0) 1489 56 58 25 • mail: info@sgluk.com